



日本女子大学大学院

JAPAN WOMEN'S UNIVERSITY GRADUATE SCHOOL

GUIDE 2026

Join us on our quest for the unknown and help create new values!

The graduate school of Japan Women's University was launched in 1961 with the establishment of the Graduate School of Home Economics (Division of Child Studies, Division of Food and Nutrition Master's Program) with the support of the Rockefeller Foundation. Since then, development has continued with the addition of the Graduate School of Human Life Science, the Graduate School of Humanities, the Graduate School of Integrated Arts and Social Sciences, and the Graduate School of Science. The Graduate School of Architectural Design was also established in 2024.

With six graduate schools and 17 divisions combining both humanities and sciences at the Mejiro Campus, where the university was opened in April 1901, the university has created an environment where students can proactively deepen their learning in an inter-disciplinary manner. The university will nurture students with broad knowledge and rich humanity along with highly specialized knowledge, by conducting education and research in diverse fields.

Details

School, Division and Program/Capacity/Degree Granted

School, Division and Program			Capacity				Degree Granted	
School	Division	Program	Master's Program		Doctoral Program		Total capacity	
			Number accepted	Capacity	Number accepted	Capacity		
Graduate School of Human Sciences and Design	Division of Child Studies	Master's Program	10	20			20	Master of Human Sciences and Design
	Division of Food and Nutrition	Master's Program	10	20			20	Master of Human Sciences and Design
	Division of Clothing	Master's Program	10	20			20	Master of Human Sciences and Design
	Division of Social and Family Economy	Master's Program	8	16			16	Master of Human Sciences and Design
	Subtotal		38	76			76	
Graduate School of Human Life Science	Division of Human Development	Doctoral Program			5	15	15	Doctor of Philosophy
	Division of Living Environment	Doctoral Program			5	15	15	Doctor of Philosophy
	Subtotal				10	30	30	
Graduate School of Humanities	Division of Japanese Language and Literature*	Master's Program and Doctoral Program	10	20	3	9	29	Master of Arts
	Division of English	Master's Program and Doctoral Program	10	20	3	9	29	Master of Arts
	Division of History and Culture*	Master's Program and Doctoral Program	6	12	3	9	21	Master of Arts
	Subtotal		26	52	9	27	79	
Graduate School of Integrated Arts and Social Sciences	Division of Social Welfare	Master's Program and Doctoral Program	10	20	3	9	29	Master of Arts (Social Welfare)
	Division of Education	Master's Program and Doctoral Program	10	20	3	9	29	Master of Arts (Education)
	Division of Studies on Contemporary Society	Master's Program and Doctoral Program	10	20	3	9	29	Master of Arts (Sociology)
	Division of Psychology	Master's Program and Doctoral Program	14	28	3	9	37	Master of Arts (Psychology)
	Division of Studies on Cultural Relativity	Master's Program and Doctoral Program	6	12	3	9	21	Master of Arts (Humanities)
	Subtotal		50	100	15	45	145	
Graduate School of Science	Division of Mathematical and Physical Sciences	Master's Program and Doctoral Program	10	20	3	9	29	Master of Science
	Division of Material and Biological Sciences	Master's Program and Doctoral Program	10	20	3	9	29	Master of Science
	Subtotal		20	40	6	18	58	
Graduate School of Architectural Design	Division of Architectural Design	Master's Program	20	40			40	Master of Architectural Design
Total			154	308	40	120	428	

* Name scheduled to be changed in April 2026

April 1, 2026

Duration of Study

The standard duration of study for the Master's Program is two years. After completion of the Master's course, students may pursue Doctoral studies for a minimum of three years. However, if there are extenuating circumstances such as being employed, the number of years of study may be three or four years for the Master's Program, with no additional tuition fees.

Completion of the Programs

A Master's degree is awarded to students who have been enrolled in the Master's Program for two or more years, have completed at least 32 subject credits (36 credits in the Graduate School of Architectural Design Division of Architectural Design), have received the necessary instruction in research, have undergone a Master's thesis review and have passed the final examination. A Doctoral degree is awarded to students who have been enrolled in the Doctoral Program for five or more years (including the two-year enrollment period in the relevant Master's Program), have completed at least 32 subject credits (36 credits in the Graduate School of Architectural Design Division of Architectural Design, and 55 credits in the Graduate School of Science), have received the necessary instruction in research, have undergone a Doctoral dissertation review, and have submitted and successfully defended the doctoral dissertation under examination.

Find out more!

See details of Graduate School Application Information on your PC or smartphone (Japanese only)

<https://www.jwu.ac.jp/unv/admission/grd/index.html> See the right side for inquiries on detailed information



Information on Graduate Schools



The Graduate School of Human Sciences and Design, Division of Housing was reformed, at the outset of the 2024 academic year, into the Graduate School of Architecture and Design, Division of Architecture and Design.

Graduate School of Architecture and Design



Comprehensive ability to explore solutions for living space

The field of architecture and design requires integration capability and creativity as well as extensive professional knowledge. To meet this need, the School of Architecture and Design will offer lectures and tutoring that will enable graduates to demonstrate a high level of professional expertise regarding architecture, houses, and the built environment in their future careers. The School will provide a teaching environment in which students receive carefully planned instruction in small groups which is tailored to the interests of each individual student.

Division of Architectural Design



From the standpoint of livability, this division nurtures deep academic knowledge, advanced research skills and design capability related to architectural design. It strives to produce talented researchers, engineers and architects who create after comprehensively thinking about future environments.





Graduate School of Human Science and Design



Outstanding professionals

The Graduate School of Human Science and Design has established four divisions—Child Studies, Food and Nutrition, Clothing and Social and Family Economy—positioned as the Master's Program.

All divisions provide spaces in which teaching personnel, with academic knowledge in their respective specialized fields and comprehensive knowledge of creating careers as advanced experts, conduct research together while aiming to develop excellent talent.

For highly advanced and specialized research in these four fields, creativity and the integration of skills and knowledge are essential. All divisions are capable of cultivating such outstanding professionals.

Division of Child Studies



This division develops personnel able to work in the world with special knowledge of child studies. Class subjects are arranged for students to choose according to their own awareness of problems and their autonomy. Literature of child studies, laboratories and playrooms are also provided.

Division of Food and Nutrition



This division nurtures advanced academic knowledge concerning theory and application on food science, nutrition science, and cooking science. This division also nurtures abilities requires for natural science research through the topics of student's master thesis. It has produced many researchers in food companies and universities.

Division of Clothing

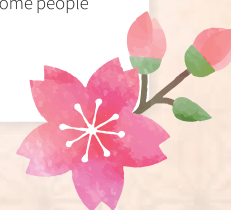


This division nurtures advanced specialized knowledge and research skills concerning the various aspects of *clothes*. It develops capable persons creating *clothes* and a fashion culture for maintaining mental and physical health suitable for a variety of environments.

Division of Social and Family Economy



This division nurtures advanced academic knowledge and research skills in both theory and practice, investigating a variety of living problems from both an economic and a public life perspective. It opens its doors to welcome people already in the workforce.





Gathering together, leaders of knowledge

The Graduate School of Human Life Science, which builds on the foundations provided by the Master's Programs of the Graduate School of Human Science and Design and the Graduate School of Architectural Design, is a separately-organized three-year Doctoral Program enabling interdisciplinary research on human life in general to explore the rapid changes that have been taking place in the natural and social environment in recent years. In addition to providing opportunities for deeper research in individual specializations that form the basis of study, the program comprises two divisions, the Division of Human Development and the Division of Living Environment, to provide a broad and comprehensive understanding of human life, and to facilitate more advanced, higher quality research. Individuals who complete this program are granted a doctoral degree.

Division of Human Development

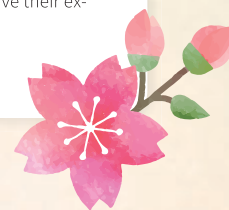


In this division, students focus their inquiry on the process of human development from perspectives such as psychology, culture and the environment. They investigate the generation, development and growth of the human body from a multidisciplinary perspective in relation to human life, including areas such as nutrition, childcare, exercise, society, etc., with the goal of realizing the maintenance and improvement of health, and disease prevention and treatment.

Division of Living Environment



In this division, students employ natural science, sociological and cultural studies methods to investigate how people can lead happier, healthier lives, from a perspective that studies the relationships between, and functions of, the clothing, food and housing environment in which humans have their existence.





Facing the core and extent of humanity

In the past, literature was a broad, inclusive expression covering various aspects of human culture that are conveyed through language. The advancement of science and the arts in recent years has brought about the expansion of literary studies and fragmentation of research fields at the same time, but the study of literature continues to be the most comprehensive investigation of humanity.

The Graduate School of Humanities is made up of the Division of Japanese Language and Literature*, the Division of English and the Division of History and Culture*.

Each division makes a strenuous effort to foster unique research fields and sophisticated methodologies essential for cutting-edge research, and provides interdisciplinary curricula to enable the creation of a mindset incorporating culture, language and history.

Division of Japanese Language and Literature*



This division aims to cultivate high-level knowledge of Japanese literature, Japanese linguistics and related fields, and to expand students' ability to undertake self-directed, innovative research. The aim is to cultivate human talent able to play a leading role in academic research, education, and the process of preserving and developing Japanese culture.

Division of English



Students in this division conduct specialized research on English literature, British cultural studies, American literature, American studies, and linguistics and the linguistics with a special focus on English. The division develops individuals with an international perspective who are capable of contributing to academic progress.

Division of History and Culture*



Responding to society's expectations regarding the study of history, the division develops researchers and educators with advanced knowledge and research skills in the areas of Japanese history, Asian history, Western history and historical representation, who are capable of conducting comparative historical research from a global perspective.

* Name scheduled to be changed in April 2026



Graduate School of Integrated Arts and Social Sciences



Creating people able to contribute to society

Through interdisciplinary research in five divisions, the Graduate School of Integrated Arts and Social Sciences aims to nurture professionals who are able to contribute to people's happiness and the development of society as researchers or advanced specialized practitioners pursuing expertise and practical activities related to changing human society.

The education and research conducted in the School aim to contribute to society by helping forge critically analytical consciousness from a diverse array of interdisciplinary, empirical approaches. The meaning of this is twofold : on the one hand, the pursuit of truth, knowledge and scientific inquiries without accommodating to the trends of our times, fulfilling the traditional function of a university, and, on the other hand, the development of practical competencies required by modern universities.

Division of Social Welfare



Students in this division aim to learn comprehensive and advanced social welfare/social work theories and social work practice skills required in contemporary society, and to improve their research and practice.

Division of Education



This division embraces students to study the educational issue throughout the life course drawing on both theoretical and empirical approaches.

Students are also encouraged to pursue a new solution about education problems occurred at homes, schools, local communities, and workplaces.

Division of Studies on Contemporary Society



This division approaches increasingly diversified phenomena and problems in contemporary society from a wide range of perspectives, including sociology, history, anthropology and economics. Based on a deep knowledge of the various disciplines, it nurtures multifaceted analytical capabilities from new perspectives.

Division of Psychology



This division aims to train clinical psychologists with high expertise, and research specialists in psychology with advanced research skills. The division provides training for "certified public psychologist" and "clinical psychologist".

Division of Studies on Cultural Relativity



This division aims to build a new paradigm of cultural studies to address the development of human culture with increasingly complex and diverse aspects, and also to nurture abundant knowledge and research skills enabling the discovery of a new dimension of cultural value.





Real knowledge and deep insight

The Graduate School of Science is made up of the Division of Mathematical and Physical Sciences and the Division of Material and Biological Sciences. The former has three subdivisions the Mathematical Structure Subdivision, the Subdivision of Science in Information Systems Architecture, and the Structural Physical Property Subdivision, where research centered on mathematics, computer science and physics is conducted. The latter is divided into the Material Function Subdivision, the Cellular and Molecular Function Subdivision, and the Physiological and Molecular Function Subdivision, and conducts research down to the molecular level centered on chemistry and biology.

All Subdivisions conduct research ranging from the fundamentals to the cutting edge, and through such studies, students acquire the skills of logical thinking and sound technique, making use of them when they go out into the world. In master's program, students in the first grade are required to present their plans and perspective on research, and those in the second year are required to present their interim reports on the master theses in the fall. All faculty members and students attend both meetings and engage in intense discussion. This helps students to improve their research plans for successful completion of their dissertations, and to deepen their understanding of and interest in various scientific problems. A comparable meeting is held in the doctoral program.

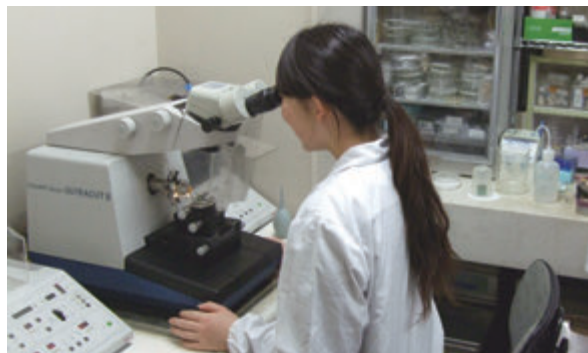
In response to the interdisciplinary requirements of today, students are allowed to take courses in both Divisions, and we offer many opportunities to exchange opinions across the two Divisions. The faculty hopes that all students will gain real knowledge and deep insight before they enter society.

Division of Mathematical and Physical Sciences



Studies of mathematical, natural and social phenomena related to mathematical and physical sciences are conducted based on structural perspectives of mathematics, computer science and physics. In this Division, students develop high levels of expertise enabling to succeed as researchers and engineers. Through training undertaken in the programs of this Division, students are expected to realize specific achievement as well as to broaden their understanding of related sciences. In the fall, students in first and second grade of Master's program are required to present their learning and research plans to deepen understanding of their own goals. Students in a doctoral program give a presentation to develop plans and methods in their research.

Division of Material and Biological Sciences



In the Division of Material and Biological Sciences, students are expected to understand the functional nature of various material and biological systems, and focus their inquiry on a specialized problem within this broad field, including not only basic chemistry or biology, but also interdisciplinary studies, such as molecular biology, environmental science or physical chemistry. This Division consists of three Subdivisions: Material Function, Cellular and Molecular Function, and Physiological and Molecular Function, each providing several courses. Although students are expected to concentrate their efforts on specific research, they are also encouraged to learn subjects from other disciplines, resulting in a wider and richer perspective.



Scholarships

Scholarship programs for graduate school students include the Japan Student Services Organization scholarships, the university's own internal scholarships and tuition fee reduction and exemption programs, as well as scholarships offered by local government and private foundations.

The scholarships listed in the table below include financial aid and scholarships based on academic and personal records or thesis reviews (Please note that the names and details of scholarships are subject to change).

For International Students/ Name	Required Qualifications	Type	Amount	Number
Izumikai/Mejirokai International Student Support Fund	International students enrolled in the university	Grant	Determined based on review	All
Izumikai International Student Academic Encouragement Prize	Students with excellent academic and personal records	Grant	Determined based on review	A few students

All Graduate Schools/ Name	Required Qualifications	Type	Amount	Number
Naruse Jinzo Memorial Prize	Prize for academic and personal excellence in memorial of the university' founder Jinzo Naruse	Grant	Determined based on review	A few students
Japan Women's University Prize for Academic Excellence	Persons attempting to independently conduct excellent research	Grant	An amount equivalent to a part of the tuition	All programs 1 person from each division
Japan Women's University Graduate School Encouragement Prize for first-year student	First-year students on a master's program who have excellent academic performance and outstanding personal qualities.	Grant	200,000 yen	1 person from each division
Morimura houmeikai Encouragement Prize	Students who have produced particularly outstanding results in specialized areas, aim to make social contributions in the future, and meet the requirements to be able to submit a Master's thesis or Doctoral thesis within the fiscal year.	Grant	500,000 yen	A few students
Japan Women's University Prize for Outstanding Extra-Curricular Achievement	Persons with outstanding achievements in non-academic fields	Grant	200,000 yen	1 person

Scholarship programs are subject to change without notice.

Tuition and Other Fees (Tentative for the 2026 Academic Year)

Fees for the 2026 academic year have not yet been finalized. For reference, the tentative (not yet finalized) fees for the graduate schools as of March 2025 academic year are shown here. The finalized fees will be announced on the website around August.

	Human Sciences and Design			Human Life Science	Humanities	Integrated Arts and Social Sciences	Science	Architectural Design	Annual amount (in Japanese yen)
	Child Studies, Clothing	Food and Nutrition	Social and Family economy						
Admission fee ※	200,000	200,000	200,000	200,000	200,000	200,000	200,000	200,000	first year only
Tuition	730,000	730,000	630,000	730,000	630,000	630,000	830,000	730,000	annual amount
Facility fee	100,000	100,000	100,000	100,000	100,000	100,000	100,000	100,000	annual amount
Student Personal accident and Liability Insurance	2,430	2,470	2,430	3,670	(Master's) 2,430 (Doctoral) 3,620	(Master's) 2,430 (Doctoral) 3,620	(Master's) 2,430 (Doctoral) 3,620	2,430	first year only
Total	1,032,430	1,032,470	932,430	1,033,670	(Master's) 932,430 (Doctoral) 933,620	(Master's) 932,430 (Doctoral) 933,620	(Master's) 1,132,430 (Doctoral) 1,133,620	1,032,430	

(※ Students who previously completed a Bachelor's degree at Japan Women's University and are admitted to a Master's degree program at the University will have the Admission fee refunded on completion of the specified procedures. The Admission fee will be waived for students who have completed a Master's degree at Japan Women's University, or who expect to complete their Master's degree at the University in the near future, and who are applying for admission to a Doctoral (Ph.D.) program at the University.)

- [Notes]1. Tuition and facility expenses from the second year may be paid separately for the first and second semesters.
2. In addition to the above fees, etc. experiment and practical training fees may be required.
3. The annual amounts of fees, etc. to be paid by long-term students, please refer to the Admission Guide.
4. Tuition, etc. may change during the enrollment.

Message from an international student

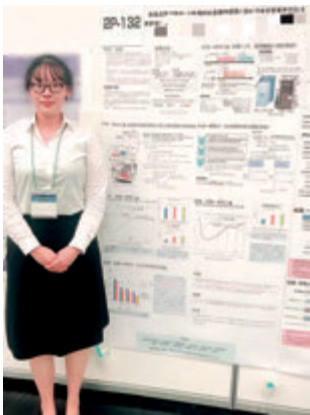
The Graduate School of Human Sciences and Design
Division of Food and Nutrition
QI MENG TIAN

When I was in my third year of university, I decided to study at a university in Japan in order to pursue my own research.

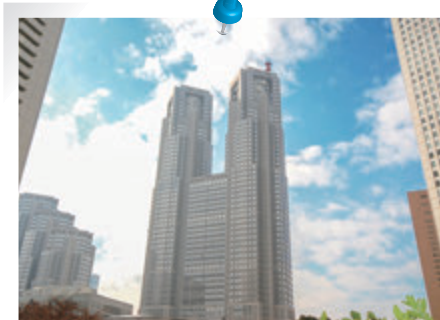
I wanted to learn Food Service Management, therefore, I applied to the Division of Food and Nutrition of the Graduate School of Human Sciences and Design at Japan Women's University.

I had many opportunities to attend academic conferences at my laboratory, therefore, I have been trained to analyze research results and deepen my thoughts, and I was also able to make presentations.

Studying abroad while at Japan Women's University was one of the most precious experiences in my life.



Route map



Shinjuku is Japan's leading shopping district with many commercial facilities and offices. The photograph is of the Tokyo Metropolitan Government Building, which is symbolic of Shinjuku.



Shibuya is on the cutting edge of the latest trends in fashion and music. It is around 30 minutes from the Mejiro Campus.

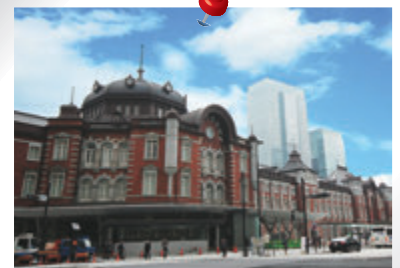


Asakusa has long been a tourist town surrounding Sensoji Temple. The Kaminarimon or "Thunder Gate" is a popular spot for photographs.



Mejiro Campus Access

- **from JR Yamanote Line, Mejiro Station**
about 15 minutes on foot or 5 minutes by bus
- **School bus for Japan Women's University**
get on at Mejiroeki-mae
get off at Nihon Joshidai-mae
- **Tokyo Metropolitan bus heading for Shinjuku Nishiguchi/Chinzanso**
get on at Mejiroeki-mae
get off at Nihon Joshidai-mae
- **Tokyo Metropolitan Subway Fukutoshin Line**
About 8 minutes on foot from Zoshigaya Station (exit 3)
- **Tokyo Metropolitan Subway Yurakucho Line**
about 10 minutes on foot from Gokokuji Station (exit 4)



The terminal station that could be called Tokyo's front door. The red brick construction leaves quite an impression.

<https://www.jwu.ac.jp/unv/>



日本女子大学大学院
JAPAN WOMEN'S UNIVERSITY GRADUATE SCHOOL

Graduate School of Architectural Design; Graduate School of Human Sciences and Design;
Graduate School of Human Life Science; Graduate School of Humanities;
Graduate School of Integrated Arts and Social Sciences; Graduate School of Science

2-8-1 Mejirodai, Bunkyo-ku, Tokyo
112-8681

E-mail n-nyushi@atlas.jwu.ac.jp



(2025.4)