



JAPAN WOMEN'S UNIVERSITY

Faculty of Science



*Follow Your Dreams
to a Bright Future*

**Bloom
as
a leader.**
SINCE 1901
Japan Women's University

We do a lot of fun things, even though some of classes and assignments are difficult.



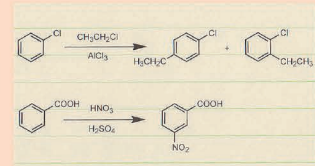
A Week in the Life of a Freshman in the Department of Mathematical and Physical Sciences

7:30 Wake up
8:30 Leave home



My first class of the day is during 2nd period, so I can take my time getting to school. Since I have a long commute to school, I can make effective use of that time by reading a book or preparing for experiments while I am on the train.

2nd Period
Organic Chemistry Seminar I
10:40 ~ 12:10



I put a lot of effort into the assignments I have to submit every week.

Lunch Break

I have lunch with my friends in the campus cafeteria.



3rd and 4th Periods
Physical Chemistry Experiment I
13:00 ~ 16:10



I spend some time analyzing data from the experiments and writing a lab report in the PC room. After that, I sometimes take a coffee break before my next class.

5th Period
Chemical and Biological Sciences Preliminary Seminar I
16:20 ~ 17:50



It is a small group class with about 10 students, and we take turns reading English reference materials.

A Week in the Life of a Freshman in the Department of Mathematical and Physical Sciences

Second Half Term Schedule

Period	1st	2nd	3rd	4th	5th
Mon	Programming practice	Basic English I	German I	Part-time job teaching at cram school	
Tue	Physics and Technology	Working on assigned report at the library	Analysis II	Problems session in Analysis II	Educational Theory
Wed		History of Mathematics	Physics Basic Experiment II	Free time	
Thu	Introduction to Physics II	Introduction to Computer Systems	Mathematics club activities in the Mathematics Library		
Fri		Physical Exercise I	Linear Algebra	Linear Algebras II seminar	Basic English II

My weekends consist of fun activities like hanging out with my friends and working at my part-time job.



Library



Co-op



PC room



Lounge

Using my free time to work on a paper



Mathematics Club activities

A Week in the Life of a Junior in the Department of Chemical and Biological Sciences

First Half Term Schedule

Period	1st	2nd	3rd	4th	5th
Mon		Animal Physiology II	Plant Molecular Physiology	Working on a report in the PC room	Chemical and Biological Sciences Preliminary Seminar II
Tue	Environmental Science I	Physical Chemistry I	Electron Microscopy	Conservation Biology	Club activities
Wed	Mathematics and Nature	Bio Technology Advanced Course	Experiment in Plant Physiology		Preparing for class, writing a paper
Thu	Part-time job at café		Free time		
Fri	Part-time job at café	Plant Physiology I	Experiment in Animal Physiology	Club activities	
Sat		Geoscience I	Free time	Part-time job teaching at cram school	

I attend classes on Saturday and take Thursday off.



A Year in a Mathematics and Physical Sciences Laboratory

April

The seminar for new seniors begins.



University admission ceremony

May

At events like futsal (indoor soccer) games and barbecues, you will have opportunities to meet with students from other universities.



An exchange with other universities

August

You have the opportunity to participate in an international conference in Korea. The question-and-answer session is held in English. This is a very valuable opportunity.



International conference

September

All students make a presentation about their research. You will have fond memories of sightseeing in the city where you do your presentation.



Training camp

November

You will have opportunities to exchange ideas and engage in dialogue with students in other laboratories on a regular basis.



Tea party

December

A midterm lab presentation is held, as well as a Japan-Korea symposium to promote exchanges with local students.



Interim report

Japan-Korea Symposium of 3 Women's Universities



EWHA WOMANS UNIVERSITY

February

You will showcase your research results when you present your graduation thesis or Master's thesis.



Graduation thesis presentation

March

After the graduation ceremony at Nishi-ikuta Naruse Auditorium, a reception is held at a different location.



Graduation ceremony



Reception

And a variety of other events...

Birthday party



You will have a wide variety of experiences through various events, allowing you to have a fruitful year.



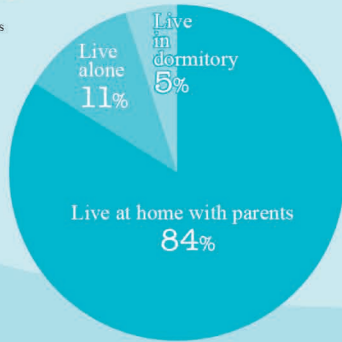
Plenty of food on hand





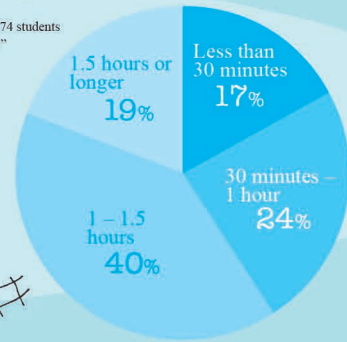
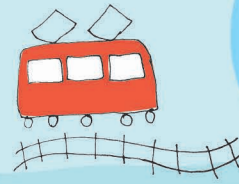
Does a university student live alone?

Source:
Results from a survey of 174 students
in "University Guide 2015"



How long is your commute time?

Source:
Results from a survey of 174 students
in "University Guide 2015"



A dormitory is available on the Mejiro campus.

We asked Department of Science students who live there to share some thoughts on dorm life.



- Upperclassmen taught me how to write up a lab report on an experiment and master numerical processing methods.
- Some of the seniors taught me what to expect on tests based on trends in the past exams, which really helped me study more effectively.
- The dormitory is close to the university, so the commute is really short and I can use my time more effectively.



Japan Women's University
Faculty of Science

2-8-1 Mejiro-dai, Bunkyo-ku, Tokyo 112-8681

▼ For details, visit us online at:

[URL http://www.jwu.ac.jp/unv/faculty_department/science/about/](http://www.jwu.ac.jp/unv/faculty_department/science/about/)

For more information on entrance exam guidelines,
send in the card on the last page of the faculty guide (Guide 2017).