



日本女子大学大学院

JAPAN WOMEN'S UNIVERSITY GRADUATE SCHOOL

GUIDE 2024



Join us on our quest for the unknown and help create new values!

The university's graduate school was launched with the establishment of the Graduate School of Home Economics (Division of Child Studies, Division of Food and Nutrition Master's Program) with the support of the Rockefeller Foundation in 1961. Since then, development has continued, leading to the establishment of 16 divisions in five schools: the Graduate School of Human Sciences and Design; the Graduate School of Human Life Science; the Graduate School of Humanities; the Graduate School of Integrated Arts and Social Sciences; and the Graduate School of Science. A new Graduate School of Architectural Design is scheduled to be established in 2024.

Marking the 120th anniversary of the university, the five graduate schools have been consolidated at the Mejiro Campus, where the university was founded in April 1901. In this way, the university has created an environment where students can proactively deepen their learning in an inter-disciplinary manner. The university will nurture students with broad knowledge and rich humanity along with highly specialized knowledge, by conducting education and research in diverse fields.

Details

School, Division and Program/Capacity/Degree Granted

School, Division and Program			Capacity				Degree Granted		
School	Division	Program	Master's Program		Doctoral Program		Total capacity	Master's	Doctorate
			Number accepted	Capacity	Number accepted	Capacity			
Graduate School of Human Sciences and Design	Division of Child Studies	Master's Program	10	20			20	Master of Human Sciences and Design	
	Division of Food and Nutrition	Master's Program	10	20			20	Master of Human Sciences and Design	
	Division of Clothing	Master's Program	10	20			20	Master of Human Sciences and Design	
	Division of Social and Family Economy	Master's Program	8	16			16	Master of Human Sciences and Design	
	Subtotal			38	76			76	
Graduate School of Human Life Science	Division of Human Development	Doctoral Program			5	15	15		Doctor of Philosophy
	Division of Living Environment	Doctoral Program			5	15	15		Doctor of Philosophy
	Subtotal				10	30	30		
Graduate School of Humanities	Division of Japanese	Master's Program and Doctoral Program	10	20	3	9	29	Master of Arts	Doctor of Arts
	Division of English	Master's Program and Doctoral Program	10	20	3	9	29	Master of Arts	Doctor of Arts
	Division of History	Master's Program and Doctoral Program	6	12	3	9	21	Master of Arts	Doctor of Arts
	Subtotal			26	52	9	27	79	
Graduate School of Integrated Arts and Social Sciences	Division of Social Welfare	Master's Program and Doctoral Program	10	20	3	9	29	Master of Arts (Social Welfare)	Doctor of Philosophy (Social Welfare)
	Division of Education	Master's Program and Doctoral Program	10	20	3	9	29	Master of Arts (Education)	Doctor of Philosophy (Education)
	Division of Studies on Contemporary Society	Master's Program and Doctoral Program	10	20	3	9	29	Master of Arts (Sociology)	Doctor of Philosophy
	Division of Psychology	Master's Program and Doctoral Program	14	28	3	9	37	Master of Arts (Psychology)	Doctor of Philosophy (Psychology)
	Division of Studies on Cultural Relativity	Master's Program and Doctoral Program	6	12	3	9	21	Master of Arts (Humanities)	Doctor of Philosophy (Humanities)
Subtotal			50	100	15	45	145		
Graduate School of Science	Division of Mathematical and Physical Sciences	Master's Program and Doctoral Program	10	20	3	9	29	Master of Science	Doctor of Science
	Division of Material and Biological Sciences	Master's Program and Doctoral Program	10	20	3	9	29	Master of Science	Doctor of Science
	Subtotal			20	40	6	18	58	
Graduate School of Architectural Design	Division of Architectural Design	Master's Program	20	40			40	Master of Architectural Design	
Total			154	308	40	120	428		

April 1, 2024 (Scheduled)

Duration of Study

The standard duration of study for the Master's Program is two years. After completion of the Master's course, students may pursue Doctoral studies for a minimum of three years. However, if there are extenuating circumstances such as being employed, the number of years of study may be three or four years for the Master's Program, with no additional tuition fees.

Completion of the Programs

A Master's degree is awarded to students who have been enrolled in the Master's Program for two or more years, have completed at least 32 subject credits (36 credits in the Graduate School of Architectural Design Division of Architectural Design), have received the necessary instruction in research, have undergone a Master's thesis review and have passed the final examination. A Doctoral degree is awarded to students who have been enrolled in the Doctoral Program for five or more years (including the two-year enrollment period in the relevant Master's Program), have completed at least 32 subject credits (36 credits in the Graduate School of Architectural Design Division of Architectural Design, and 55 credits in the Graduate School of Science), have received the necessary instruction in research, have undergone a Doctoral dissertation review, and have submitted and successfully defended the doctoral dissertation under examination.

Find out more!

See details of Graduate School Application Information on your PC or smartphone (Japanese only)

<https://www.jwu.ac.jp/unv/admission/grd/index.html> See the right side for inquiries on detailed information



Information on Graduate Schools



The Graduate School of Human Sciences and Design, Division of Housing will be reformed into the Graduate School of Architectural Design, Division of Architectural Design in the 2024 academic year.

Graduate School of Architectural Design



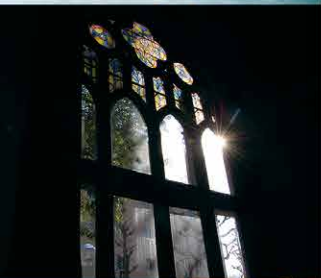
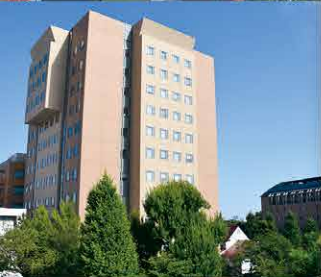
Comprehensive ability to explore solutions for desirable housing

Architectural design is a field that requires integration capability and creativity as well as extensive specialist knowledge. To meet this need, the School of Architectural Design will offer lectures and tutoring that will enable graduates to demonstrate a high level of professional expertise regarding architecture, houses, and the built environment in their future careers. The School will provide a teaching environment in which students receive carefully planned instruction in small groups which is tailored to the interests of each individual student.

Division of Architectural Design



This division nurtures deep academic knowledge, advanced research skills and design capability related to housing and architecture. It strives to produce talented researchers, engineers and architects who approach and create living environments for the future in a comprehensive manner.



Graduate School of Human Science and Design



The Graduate School of Human Science and Design has established four divisions—Child Studies, Food and Nutrition, Clothing, and Home Economics.

All divisions provide spaces in which teaching personnel with not only academic knowledge in their respective specialized fields, but also detailed knowledge of creating careers as advanced experts, conduct research together while aiming to develop young talent.

For highly advanced and specialized research in these four fields, creativity and the integration of skills and knowledge are essential. All divisions are capable of cultivating such outstanding professionals.

Division of Child Studies



This division develops personnel able to work in the world with special knowledge of child studies. Class subjects are arranged for students to choose according to their own awareness of problems and their autonomy. Literature of child studies, laboratories and playrooms are also provided.

Division of Food and Nutrition



This division nurtures advanced academic knowledge concerning theory and application on food science, nutrition science, and cooking science. This division also nurtures abilities requires for natural science research through the topics of student's master thesis. It has produced many researchers in food companies and universities.

Division of Clothing



This division nurtures advanced specialized knowledge and research skills concerning the various aspects of *clothes*. It develops capable persons creating *clothes* and a fashion culture for maintaining mental and physical health suitable for a variety of environments.

Division of Social and Family Economy



This division nurtures advanced academic knowledge and research skills in both theory and practice, investigating a variety of living problems from both an economic and a public life perspective. It opens its doors to welcome people already in the workforce.



Graduate School of Human Life Science



Gathering together, leaders of knowledge

The Graduate School of Human Life Science, which builds on the foundations provided by the Master's Programs of the Graduate School of Human Science and Design and the Graduate School of Architectural Design, is a separately-organized three-year Doctoral Program enabling interdisciplinary research on human life in general to explore the rapid changes taking place in the natural and social environment in recent years free of the existing framework of specialization. In addition to providing opportunities for deeper research in individual specializations that form the basis of study, the program comprises two divisions, the Division of Human Development and the Division of Living Environment, to provide a broad and comprehensive understanding of human life, and to facilitate more advanced, higher quality research. Individuals who complete this program are granted a doctoral degree.

Division of Human Development

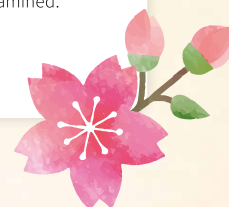


In this division, students focus their inquiry on the process of human development from perspectives such as education, psychology, culture and the environment. They investigate the growth and development of the human body along with biological theory and the ways of maintaining and improving health.

Division of Living Environment



In this division, students pursue how to live by investigating the relationships and functions present between man and a variety of environments. Clothing, food and housing are perceived to be the environment surrounding life, and the natural scientific, socioeconomic and cultural aspects are examined.





Facing the core and extent of humanity

Long ago, literature was a broad expression covering the various aspects of human culture conveyed through language. The advancement of science and the arts in recent years has brought about the expansion of literary studies, and the study of literature continues to be the most comprehensive investigation of humanity.

The Graduate School of Humanities is made up of the Division of Japanese, the Division of English and the Division of History.

Each division makes a strenuous effort to foster unique research fields and sophisticated methodologies essential for the latest research, and provides interdisciplinary curricula to enable the creation of a mindset incorporating culture, language and history.

Division of Japanese



This division aims to pass on to future generations the traditional culture of Japan and contribute to its development by cultivating advanced knowledge of the fields of study related to Japanese literature and Japanese language, while identifying their essence.

Division of English



Students in this division conduct specialized research on English literature, British cultural studies, American literature, American cultural studies, and linguistics and the English language. The division develops individuals with an international perspective who are capable of contributing to academic progress.

Division of History



In response to societal demand for the study of history, the division develops researchers and educators with advanced knowledge and research skills in Japanese, Asian and Western history who are capable of conducting comparative historical research from a global perspective.



Graduate School of Integrated Arts and Social Sciences



Creating people able to contribute to society

Through interdisciplinary research in five divisions, the Graduate School of Integrated Arts and Social Sciences aims to nurture professionals who are able to contribute to people's happiness and the development of society as researchers or advanced specialized practitioners pursuing expertise and practical activities related to changing human society.

The education and research conducted in the School aim to contribute to society by helping forge critically analytical consciousness from a diverse array of interdisciplinary, empirical approaches. The meaning of this is twofold : on the one hand, the pursuit of truth, knowledge and scientific inquiries without accommodating to the trends of our times, fulfilling the traditional function of a university, and, on the other hand, the development of practical competencies require of modern universities.

Division of Social Welfare



Students in this division aim to learn comprehensive and advanced social welfare/social work theories and social work practice skills required in contemporary society, and to improve their research and practice.

Division of Education



This division embraces students to study the educational issue throughout the life course drawing on both theoretical and empirical approaches.

Students are also encouraged to pursue a new solution about education problems occurred at homes, schools, local communities, and workplaces.

Division of Studies on Contemporary Society



This division approaches increasingly diversified phenomena and problems in contemporary society, using sociology, history, anthropology and economics.

Based on the deep knowledge of the various disciplines, it aims to provide analysis and understanding from new perspectives.

Division of Psychology



This division aims to train clinical psychologists with high expertise, and research specialists in psychology with advanced research skills. The division provides training for "certified public psychologist" and "clinical psychologist".

Division of Studies on Cultural Relativity



This division aims to build a new paradigm of cultural studies to address the development of human culture with increasingly complex and diverse aspects, and also to nurture abundant knowledge and research skills enabling the discovery of a new dimension of cultural value.





Real knowledge and deep insight

The Graduate School of Science is made up of the Division of Mathematical and Physical Sciences and the Division of Material and Biological Sciences. The former has three subdivisions the Mathematical Structure Subdivision, the Subdivision of Science in Information Systems Architecture, and the Structural Physical Property Subdivision, where research centered on mathematics, computer science and physics is conducted. The latter is divided into the Material Function Subdivision, the Cellular and Molecular Function Subdivision, and the Physiological and Molecular Function Subdivision, and conducts research down to the molecular level centered on chemistry and biology.

All Subdivisions conduct research ranging from the fundamentals to the cutting edge, and through such studies, students acquire the skills of logical thinking and sound technique, making use of them when they go out into the world. In master's program, students in the first grade are required to present their plans and perspective on research, and those in the second year are required to present their interim reports on the master theses in the fall. All faculty members and students attend both meetings and engage in intense discussion. This helps students to improve their research plans for successful completion of their dissertations, and to deepen their understanding of and interest in various scientific problems. A comparable meeting is held in the doctoral program.

In response to the interdisciplinary requirements of today, students are allowed to take courses in both Divisions, and we offer many opportunities to exchange opinions across the two Divisions. The faculty hopes that all students will gain real knowledge and deep insight before they enter society.

Division of Mathematical and Physical Sciences



Studies of mathematical, natural, and social phenomena related to mathematical and physical sciences are conducted based on structural perspectives of mathematics, computer science and physics. In the division students develop a high level of expertise to succeed as scientists, experts and engineers. Through training undertaken in the programs of this Division, students are expected to realize specific achievement as well as to broaden their understanding of related sciences. In the fall, students in first and second grade of Master's program are required to present their learning and research plans to deepen understanding of their own goals. Students in a doctoral program give a presentation to develop plans and methods in their research.

Division of Material and Biological Sciences



In the Division of Material and Biological Sciences, students are expected to understand the functional nature of various material and biological systems, and focus their inquiry on a specialized problem within this broad field, including not only basic chemistry or biology, but also interdisciplinary studies, such as molecular biology, environmental science or physical chemistry. This Division consists of three Subdivisions: Material Function, Cellular and Molecular Function, and Physiological and Molecular Function, each providing several courses. Although students are expected to concentrate their efforts on specific research, they are also encouraged to learn subjects from other disciplines, resulting in a wider and richer perspective.



Scholarships

Scholarship programs for graduate school students include the Japan Student Services Organization scholarships, the university's own internal scholarships and tuition fee reduction and exemption programs, as well as scholarships offered by local government and private foundations.

The scholarships listed in the table below include financial aid and those based on academic and personal records or thesis reviews.

For International Students/ Name	Standard	Loan	Amount	Number
Partial Tuition-Waiver Scholarship for Privately Financed International Students	Privately funded international students with student visa status who are in economic difficulty	Grant	30% of tuition	All students who meet the requirements
Izumikai/Mejirokai International Student Support Fund	International students enrolled in the university	Grant	Determined based on review	All
Izumikai International Student Academic Encouragement Prize	Students with excellent academic and personal records	Grant	Determined based on review	A few students

All Graduate Schools/ Name	Standard	Loan	Amount	Number
Naruse Jinzo Memorial Prize	Prize for academic and personal excellence in memorial of the university's founder Jinzo Naruse	Grant	Determined based on review	A few students
Japan Women's University Prize for Academic Excellence	Persons attempting to independently conduct excellent research	Grant	Partial waiver of tuition fees	A few students
Japan Women's University Graduate School Encouragement Prize for first-year student	First-year students on a master's program who have excellent academic performance and outstanding personal qualities.	Grant	200,000 yen	1 person from each division
Morimura houmeikai Encouragement Prize	Students who have produced particularly outstanding results in specialized areas, aim to make social contributions in the future, and meet the requirements to be able to submit a Master's thesis or Doctoral thesis within the fiscal year.	Grant	500,000 yen	A few students
Japan Women's University Prize for Outstanding Extra-Curricular Achievement	Persons with good personal and academic records who have excellent achievements in areas such as women's education, social activities, academia, culture, art or sport.	Grant	200,000 yen	1 person

Scholarship programs are subject to change without notice.

Tuition and Other Fees

Fees for the 2024 academic year have not yet been finalized. For reference, the anticipated (not yet finalized) fees for the Graduate School of Architectural Design Master's Program for the 2024 academic year are shown here.

	Human Sciences and Design			Human Life Science	Humanities	Integrated Arts and Social Sciences	Science	Architectural Design	Annual amount (in Japanese yen)
	Child Studies, Clothing	Food and Nutrition	Social and Family economy						
Admission fee ※	200,000	200,000	200,000	200,000	200,000	200,000	200,000	200,000	first year only
Tuition	700,000	700,000	600,000	700,000	600,000	600,000	800,000	700,000	annual amount
Facility fee	100,000	100,000	100,000	100,000	100,000	100,000	100,000	100,000	annual amount
Student Personal accident and Liability Insurance	2,430	2,470	2,430	3,670	(Master's) 2,430 (Doctoral) 3,620	(Master's) 2,430 (Doctoral) 3,620	(Master's) 2,430 (Doctoral) 3,620	2,430	first year only
Total	1,002,430	1,002,470	902,430	1,003,670	(Master's) 902,430 (Doctoral) 903,620	(Master's) 902,430 (Doctoral) 903,620	(Master's) 1,102,430 (Doctoral) 1,103,620	1,002,430	

(※ Students who previously completed a Bachelor's degree at Japan Women's University and are admitted to a Master's degree program at the University will have the Admission fee refunded on completion of the specified procedures. The Admission fee will be waived for students who have completed a Master's degree at Japan Women's University, or who expect to complete their Master's degree at the University in the near future, and who are applying for admission to a Doctoral (Ph.D.) program at the University.)

[Notes]1. Tuition and facility expenses from the second year may be paid separately for the first and second semesters.

2. In addition to the above fees, etc. experiment and practical training fees may be required.

3. The annual amounts of fees, etc. to be paid by long-term students, please refer to the Admission Guide.

4. Tuition, etc. may change during the enrollment.

Message from an international student

**The Graduate School of Human Sciences and Design
Division of Food and Nutrition**

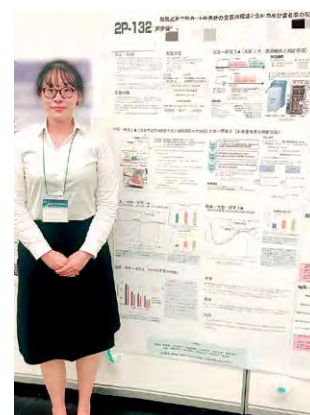
QI MENG TIAN

When I was in my third year of university, I decided to study at a university in Japan in order to pursue my own research.

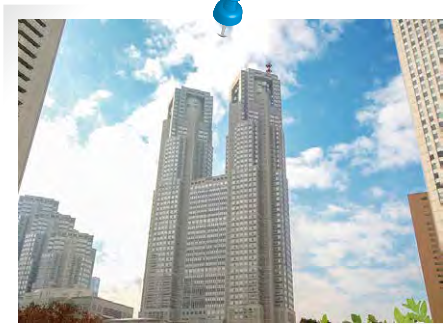
I wanted to learn Food Service Management, therefore, I applied to the Division of Food and Nutrition of the Graduate School of Human Sciences and Design at Japan Women's University.

I had many opportunities to attend academic conferences at my laboratory, therefore, I have been trained to analyze research results and deepen my thoughts, and I was also able to make presentations.

Studying abroad while at Japan Women's University was one of the most precious experiences in my life.



Route map



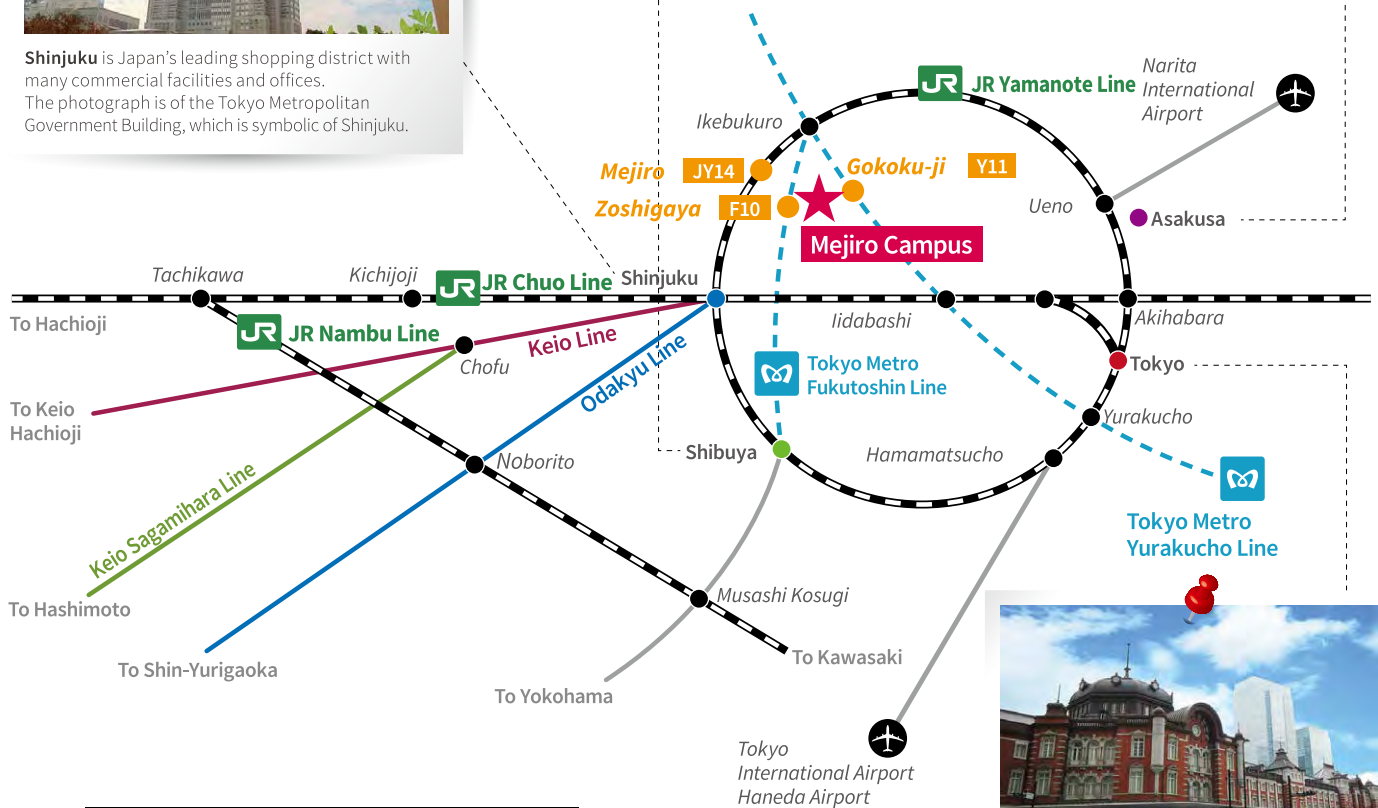
Shinjuku is Japan's leading shopping district with many commercial facilities and offices. The photograph is of the Tokyo Metropolitan Government Building, which is symbolic of Shinjuku.



Shibuya is on the cutting edge of the latest trends in fashion and music. It is around 30 minutes from the Mejiro Campus.



Asakusa has long been a tourist town surrounding Sensoji Temple. The Kaminarimon or "Thunder Gate" is a popular spot for photographs.



The terminal station that could be called Tokyo's front door. The red brick construction leaves quite an impression.

Mejiro Campus Access

- from JR Yamanote Line, Mejiro Station
about 15 minutes on foot or 5 minutes by bus
- School bus for Japan Women's University
get on at Mejiroeki-mae
get off at Nihon Joshidai-mae
- Tokyo Metropolitan bus heading for Shinjuku Nishiguchi/Chinzanso
get on at Mejiroeki-mae
get off at Nihon Joshidai-mae
- Tokyo Metropolitan Subway Fukutoshin Line
About 8 minutes on foot from Zoshigaya Station (exit 3)
- Tokyo Metropolitan Subway Yurakucho Line
about 10 minutes on foot from Gokokuji Station (exit 4)

<https://www.jwu.ac.jp/unv/>



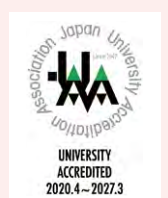
日本女子大学大学院
JAPAN WOMEN'S UNIVERSITY GRADUATE SCHOOL

Mejiro Campus

Graduate School of Architectural Design; Graduate School of Human Sciences and Design;
Graduate School of Human Life Science; Graduate School of Humanities;
Graduate School of Integrated Arts and Social Sciences; Graduate School of Science
2-8-1 Mejirodai, Bunkyo-ku, Tokyo
112-8681

E-mail n-nyushi@atlas.jwu.ac.jp

*Please note that the information presented in this brochure regarding the Graduate School of Architectural Design is provisional and may be subject to change.



(2023.5)